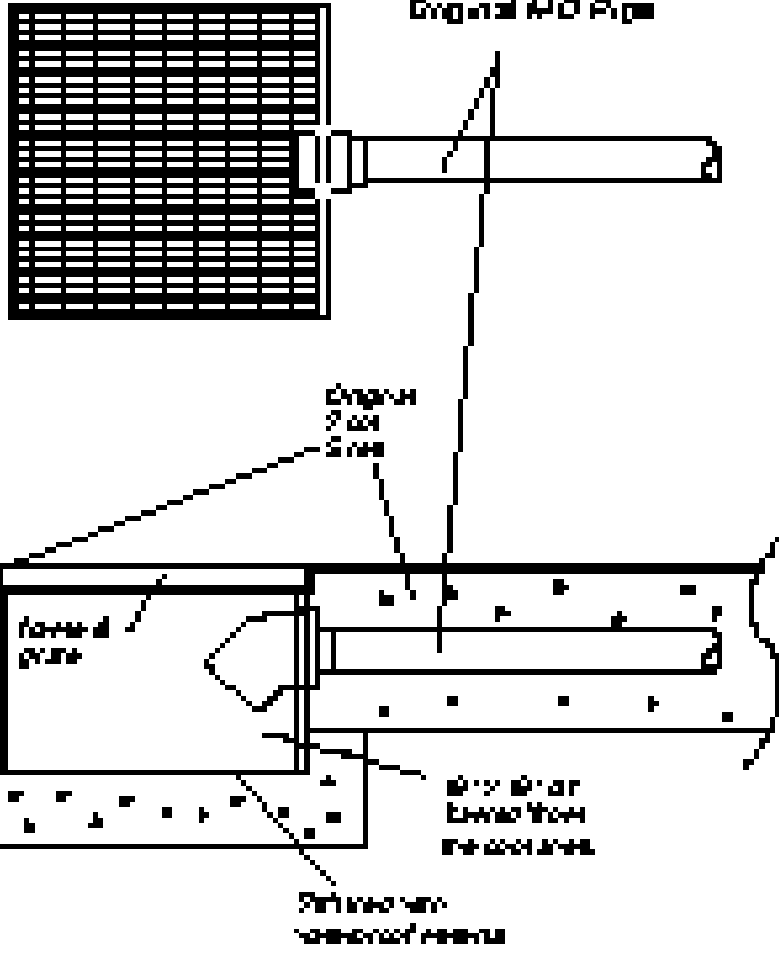


"Large Drain" Installation

An 18" by 18" grate provides a cross section of larger than 24" (if measured diagonally) which the Texas Department of Health deems "non-acceptable" because of its size. The suction outlet to the main drain must be at least one and one half times the diameter of the suction pipe or 3 inches. Poole By Dalco, Inc. has developed a method to allow for the installation of our LARGE DRAIN that retains the integrity of the pool vessel.

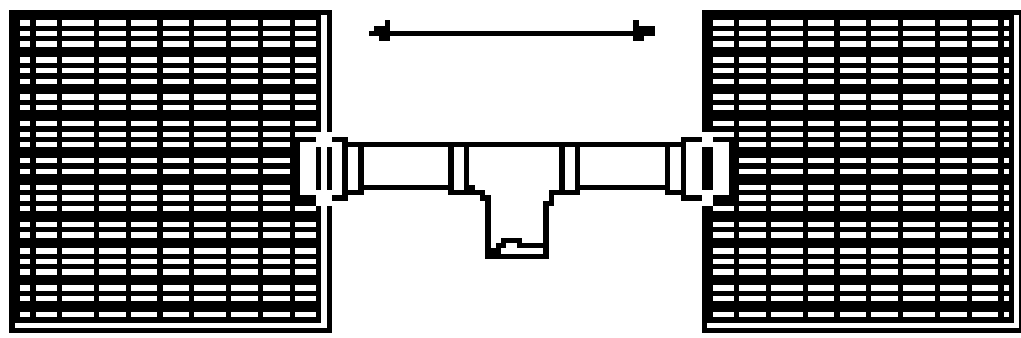
Additional floor are recommended 6 to 8" thick having a necessary to provide concrete around the new drain.



On a "Large Drain" installation the mud should not be pulled out the pool floor, the pipe to the piping of the appropriate distance from the grate. The suction over an additional large area and a wide of the face the velocity of water through the grate must all other requirements.

A completely safe drain configuration.

Minimum distance 3 ft. apart



Dual Main Drains 18" X 18" which measure larger than 24" diagonally